

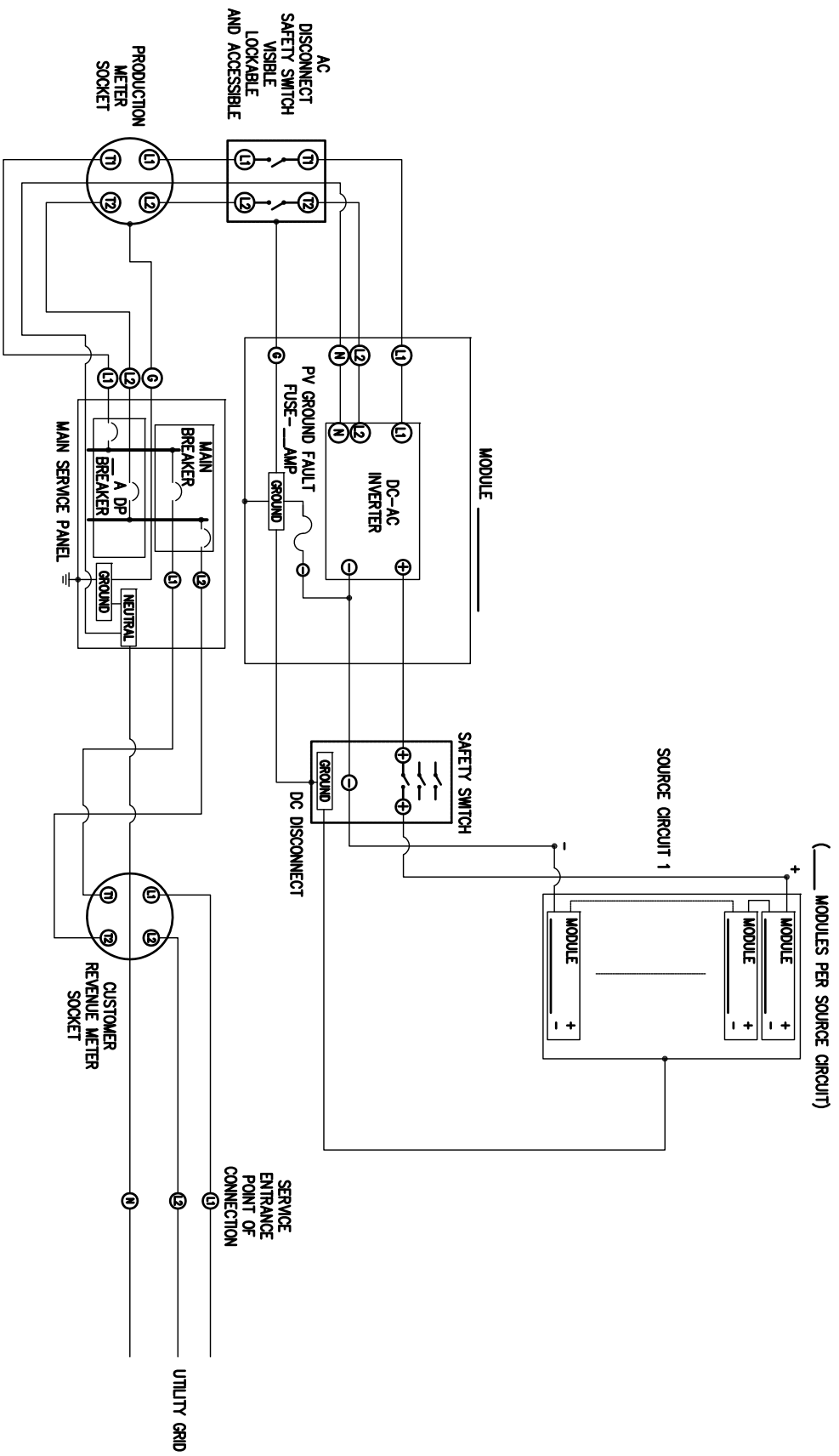
- NOTES:
1. CUSTOMER SHALL SUPPLY AND INSTALL METER SOCKET FOR PV METER.
 2. METER SOCKET FOR PRODUCTION METER SHALL BE SPECIFIED BY RIVERSIDE PUBLIC UTILITIES AND IN COMPLIANCE WITH NEC AND EUSERC REQUIREMENTS.
 3. PRODUCTION METER IS SUPPLIED AND INSTALLED BY RIVERSIDE PUBLIC UTILITIES.

MODULE ELECTRICAL SPECIFICATIONS

OPEN CIRCUIT VOLTAGE (V_{oc}): _____ VDC
 OPERATING VOLTAGE (V_{mp}): _____ VDC
 SHORT CIRCUIT CURRENT (I_{sc}): _____ ADC
 OPERATING CURRENT (I_{mp}): _____ ADC
 NOMINAL WATTAGE (W): _____ WATTS

INVERTER ELECTRICAL SPECIFICATIONS

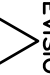
AC VOLTAGE (VAC): _____ (+/- 5%) VAC, 1 PHASE
 CONTINUOUS POWER (W): _____ WATTS
 DC VOLTAGE RANGE (min-max): _____ VDC
 DC AMPERAGE INPUT (max): _____ ADC



NOT TO SCALE

TYPICAL RESIDENTIAL PV SINGLE LINE DIAGRAM

PROVIDE FOR REFERENCE ONLY

REVISION:  SHIT. 4 OF 5

DATE	5-9-2011	CHECKED BY	B. HARRIS
DRAWN	P. MARSHALL	APPROVED	C. ANCHETA

CITY OF RIVERSIDE
DEPARTMENT OF PUBLIC UTILITIES