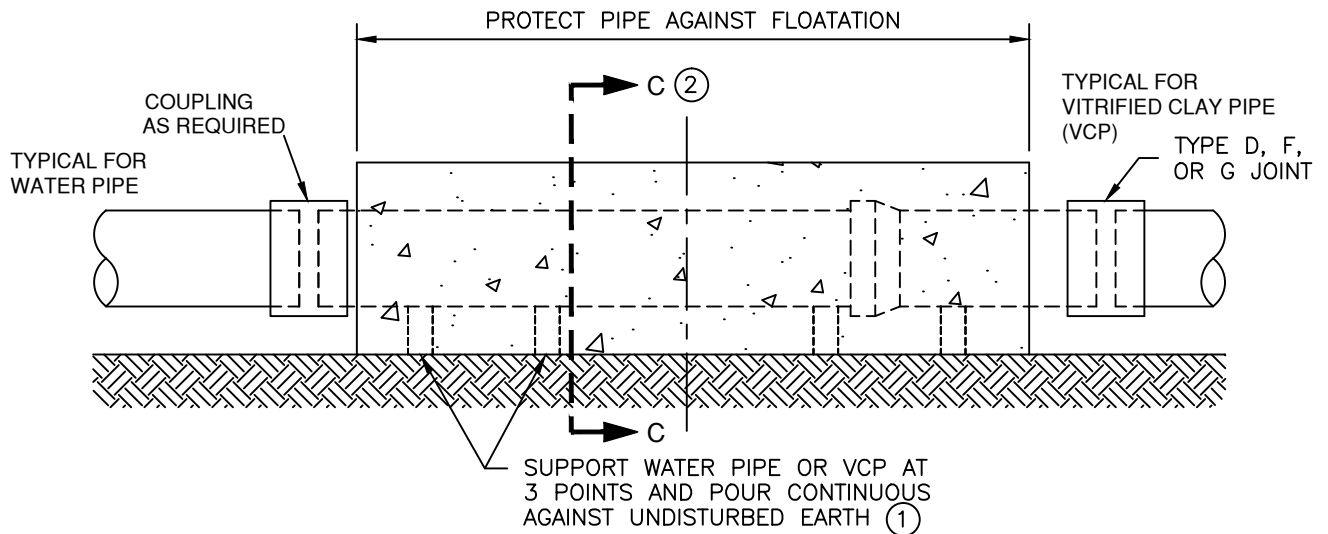


TYPE A OR B ENCASEMENT FOR WATER & SEWER
 REQUIRED TO SPAN TRENCH, OR WHERE ENCASEMENT
 IS NOT POURED ON UNDISTURBED EARTH

NOTE:

- ① EXTEND MACHINED PIPE ENDS BEYOND ENCASEMENT
- ② SEE CWD-023-2 FOR CROSS-SECTION OF A, B, OR C ENCASEMENT DETAIL
- ③ PIPE JOINT TYPES AND MATERIALS ARE PER GREEN BOOK SECTION 208



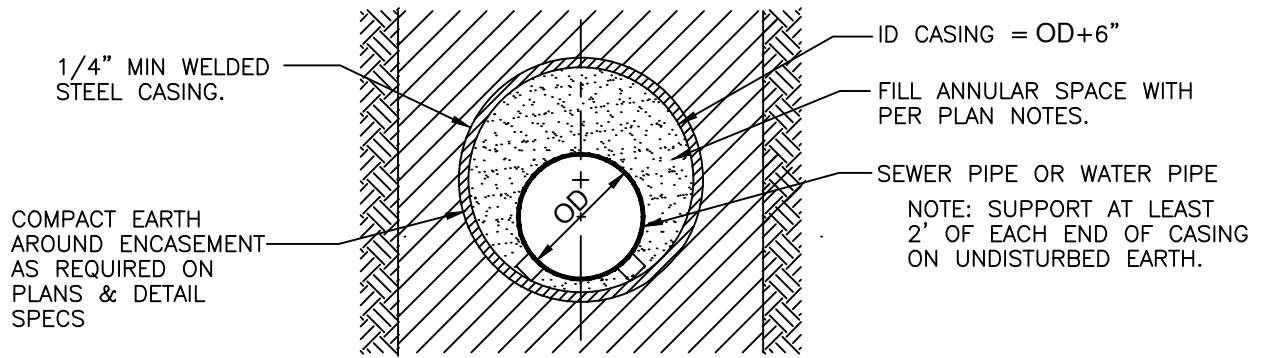
TYPE C ENCASEMENT FOR WATER & SEWER



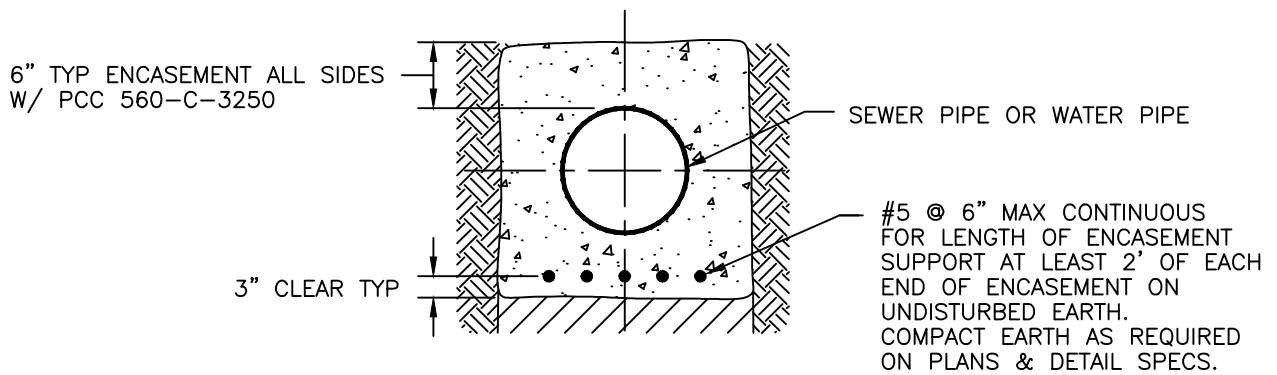
WATER DISTRIBUTION & TRANSMISSION
 PIPELINE CONSTRUCTION METHODS

STRUCTURE INTERFERENCE
 TYPE A, B, OR C ENCASEMENT

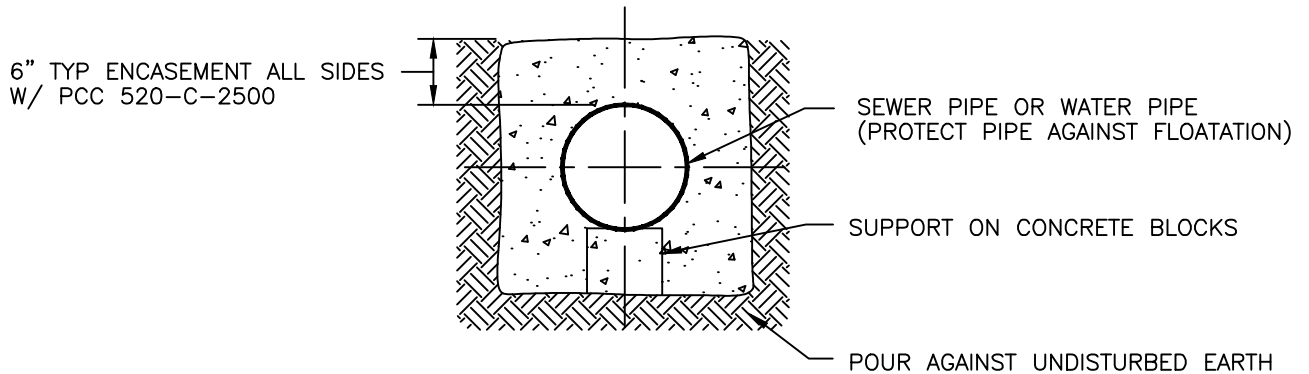
OD = OUTSIDE DIAMETER OF BELL, COLLAR, OR COUPLING.



**TYPE A - PIPE CASING
SECTION A**



**TYPE B - REINFORCED ENCASEMENT
SECTION B**



**TYPE C - PLAIN ENCASEMENT
SECTION C**

GENERAL NOTES

- 1.) ALL MATERIALS OF CONSTRUCTION SHALL CONFORM TO "STANDARD SPECIFICATIONS FOR PUBLIC WORKS CONSTRUCTION"



WATER DISTRIBUTION & TRANSMISSION
PIPELINE CONSTRUCTION METHODS

STRUCTURE INTERFERENCE
ENCASEMENT SECTIONS