

CONCRETE FILLED MANHOLE COVER (PARKWAY USE ONLY)

UGS

REVISION: Updated Border, Format & Details
 Marked for Maintenance Only.

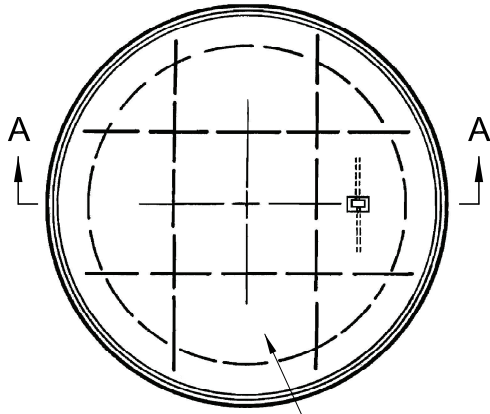
CHECKED BY
 (ENGINEERING): SJ

DATE: 10/24/17

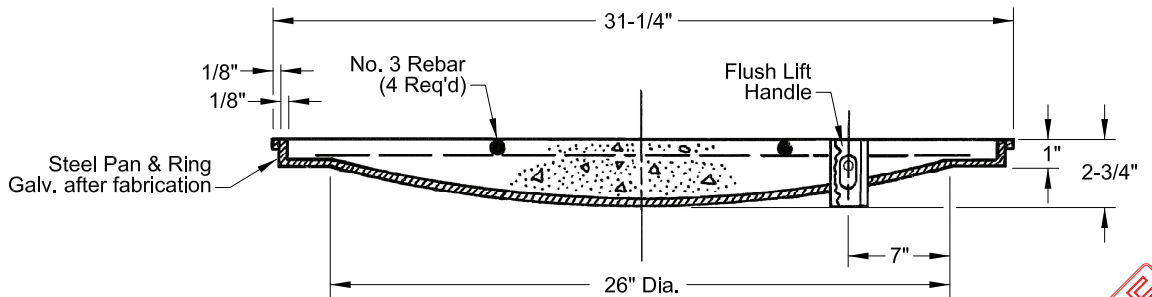
CHECKED BY
 (FIELD): JH

APPROVED BY: *Stephen E. Saford*

PREPARED
 BY: SJR



Concrete surface to be broom finished or matched to the surrounding pavement.



SECTION "A-A"

Notes:

1. Cover designed for Alhambra Foundry frame no. A-1105 or equal.
 2. Concrete may be poured on job-site * or cover may be purchased pre-poured.
 3. 28 day concrete compressive strength to equal 3000 PSI.
 4. Total weight = 185 lbs.
 5. Supplier of precast type: Brooks Products, inc. El Monte, Calif.
- * If poured on job-site, the cover must be in place at time of pouring and index marks (notches) cut in the cover edge and outside frame.

MAINTENANCE ONLY

NOT FOR NEW CONSTRUCTION