

PJC (5', 7' & 9'-6") REQUIREMENTS (PRECAST)

REVISION: Updated Table

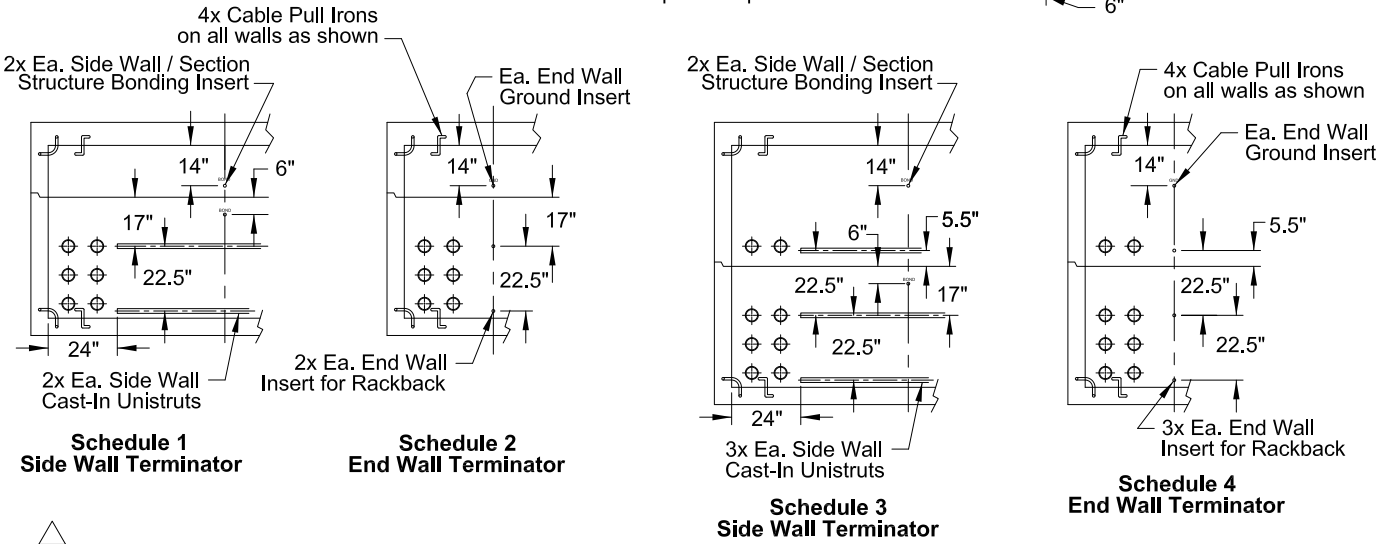
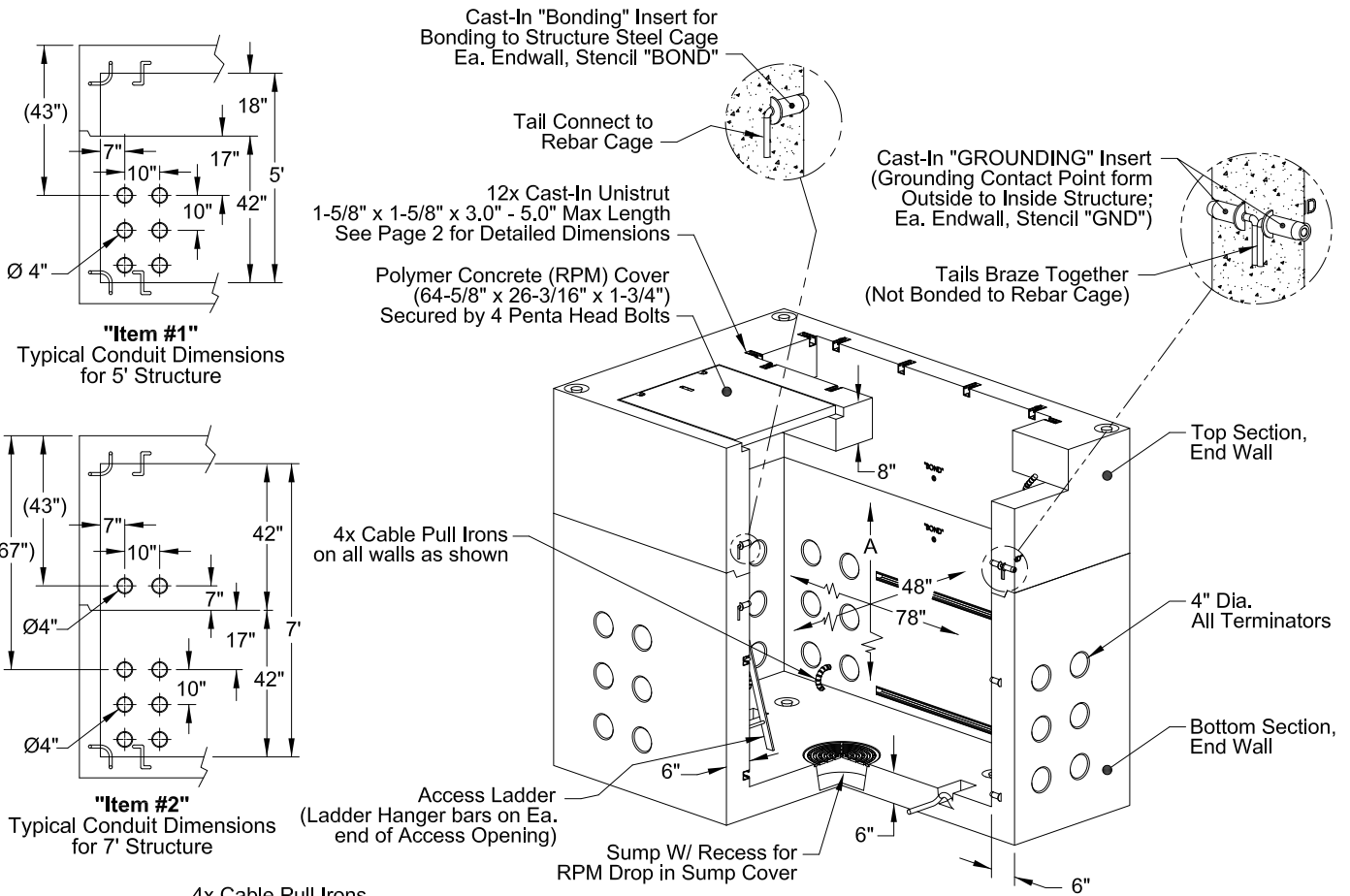
CHECKED BY (ENGINEERING): SJ

DATE: 04/17/17

CHECKED BY (FIELD): RJ

APPROVED BY: *Stephen E. Saford*

PREPARED BY: SJR



Item No.	Nominal Size "Inside" (Depth x Width x Height)	Terminator Schedule		Dimension
		Side Wall	End Wall	
1	4' x 6' 6" x 5' PJC	1	2	60"
2	4' x 6' 6" x 7' PJC	3	4	84"
3	4' x 6' 6" x 9'6" PJC (with 30" Center Extension), See Page 2	5	6	114"

- Notes:
- See UGS-005 for RPU Approved manufacturers of precast PJC structures and catalog numbers.
 - Top Endwall terminator approximate depth is 37" (with structure 4" above ground level).
 - Items # 2 & 3 may require ladder for entry / exit of structure.

